

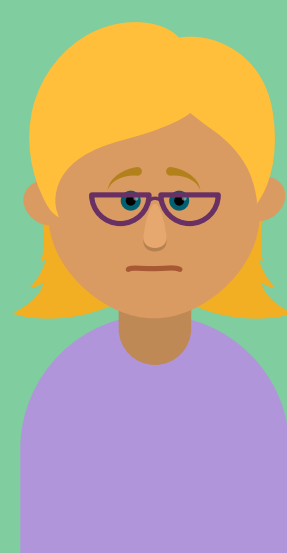
How much will my fine be if I don't pay the toll/charge?



If you don't pay for your journey by midnight the day after travelling, you will receive a penalty charge notice of:

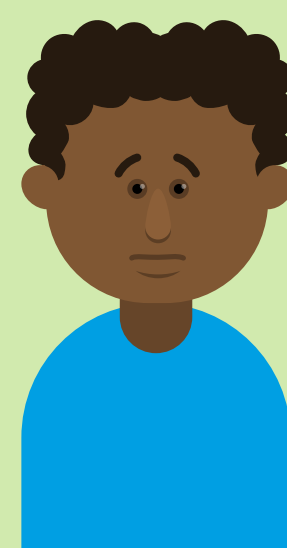
Within
14
days of
issue

£20
plus unpaid
toll/charge



Within
28
days of
issue

£40
plus unpaid
toll/charge



Within
42
days of
issue

£60
plus unpaid
toll/charge

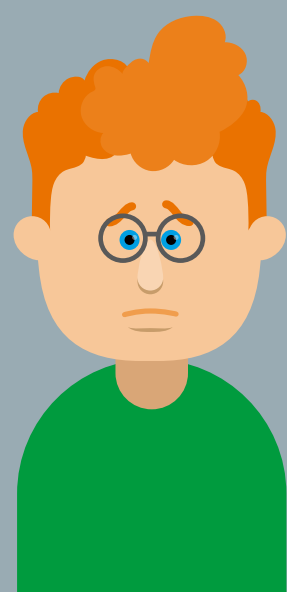


Beyond
42
days
after
issue

Penalty registered as a civil debt

Recovery action will begin and enforcement agents may be instructed.

The precise cost could run into hundreds of pounds depending on the cost of recovering the debt.



Registering for an account with merseyflow is the best way to avoid a fine. Admin fees apply when registering.

www.merseyflow.co.uk

 info@merseyflow.co.uk

 [merseyflowtolls](https://www.facebook.com/merseyflowtolls)

 [@merseyflow](https://twitter.com/merseyflow)